

Run → cmd → X: (where x: is the drive scheduled for scan)

X:\> chkdsk /f ↵

The type of this file system is NTFS.

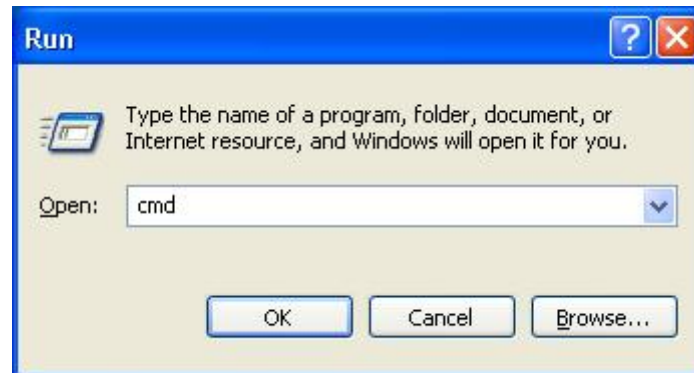
Cannot lock current drive.

Chkdsk cannot run because the volume is in use by another process. Chkdsk may run if this volume is dismounted first.

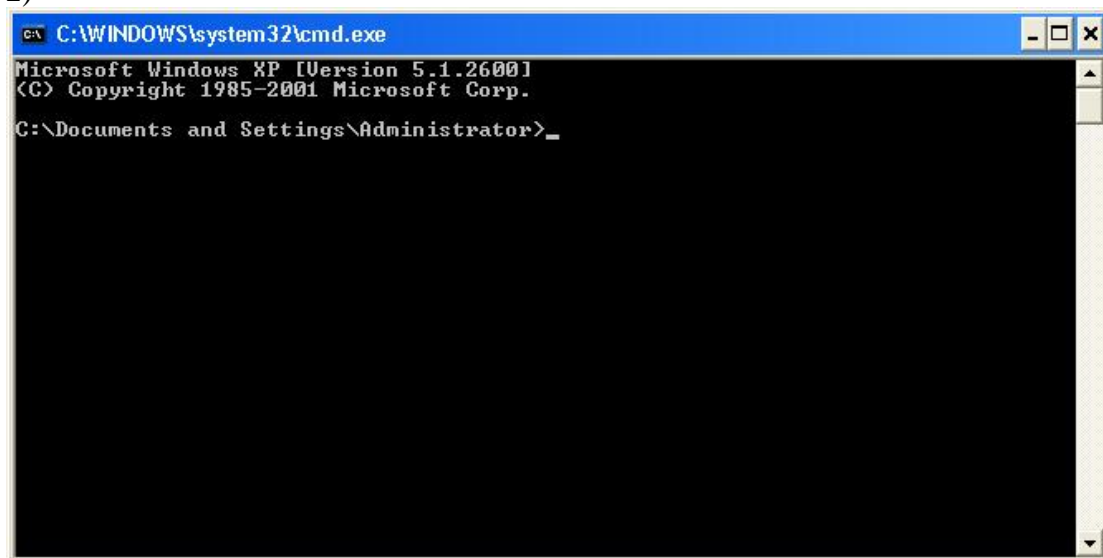
ALL OPENED HANDLES TO THIS VOLUME WOULD THEN BE INVALID.

Would you like to force a dismount on this volume? (Y/N) Y ↵

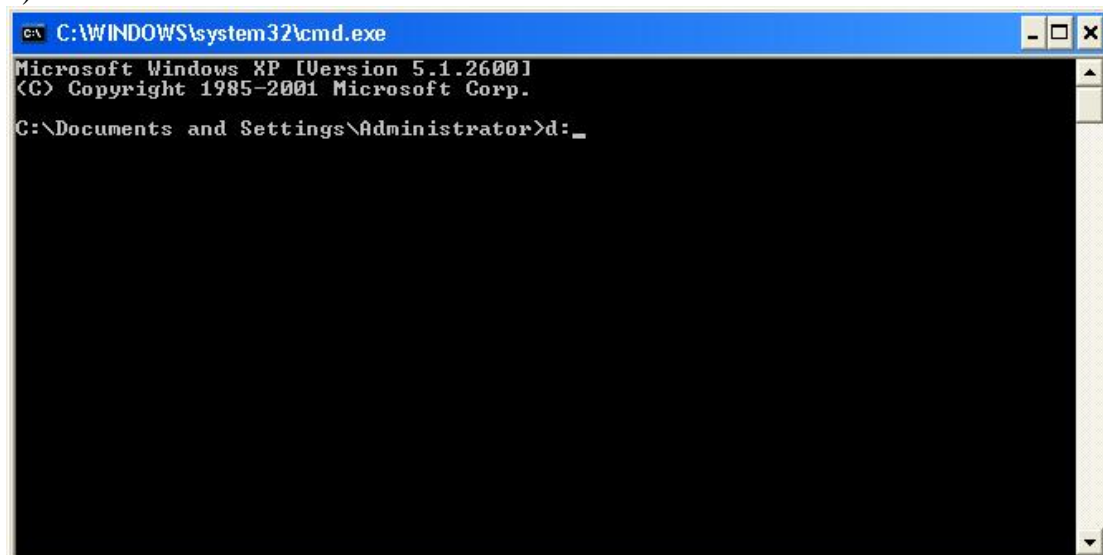
1)



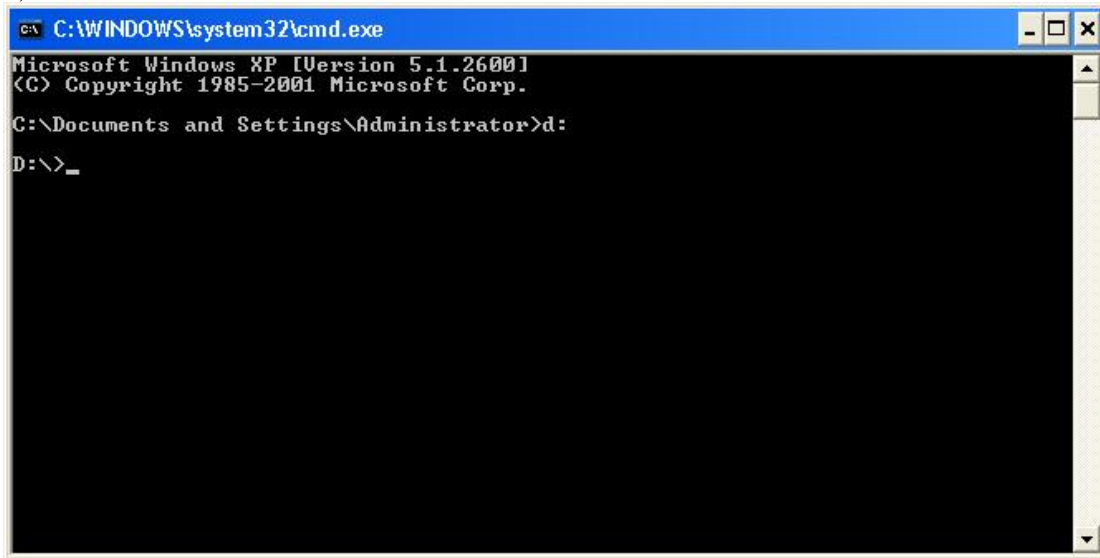
2)



3)



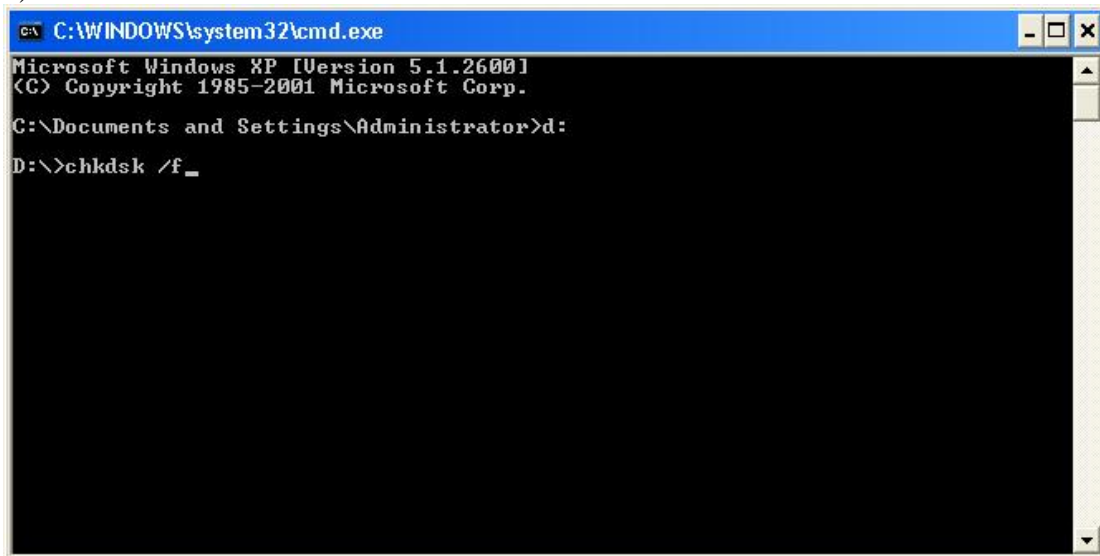
4)



```
C:\WINDOWS\system32\cmd.exe
Microsoft Windows XP [Version 5.1.2600]
(C) Copyright 1985-2001 Microsoft Corp.

C:\Documents and Settings\Administrator>d:
D:\>_
```

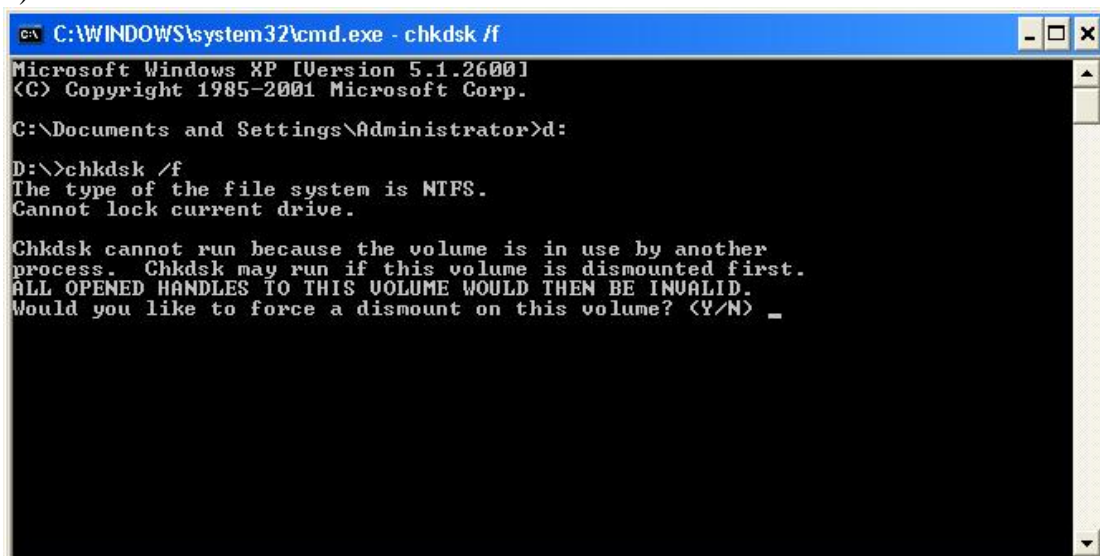
5)



```
C:\WINDOWS\system32\cmd.exe
Microsoft Windows XP [Version 5.1.2600]
(C) Copyright 1985-2001 Microsoft Corp.

C:\Documents and Settings\Administrator>d:
D:\>chkdsk /f_
```

6)



```
C:\WINDOWS\system32\cmd.exe - chkdsk /f
Microsoft Windows XP [Version 5.1.2600]
(C) Copyright 1985-2001 Microsoft Corp.

C:\Documents and Settings\Administrator>d:
D:\>chkdsk /f
The type of the file system is NTFS.
Cannot lock current drive.

Chkdsk cannot run because the volume is in use by another
process. Chkdsk may run if this volume is dismounted first.
ALL OPENED HANDLES TO THIS VOLUME WOULD THEN BE INVALID.
Would you like to force a dismount on this volume? (Y/N) _
```

7)

```
C:\WINDOWS\system32\cmd.exe - chkdsk /f
Microsoft Windows XP [Version 5.1.2600]
(C) Copyright 1985-2001 Microsoft Corp.

C:\Documents and Settings\Administrator>d:
D:\>chkdsk /f
The type of the file system is NTFS.
Cannot lock current drive.

Chkdsk cannot run because the volume is in use by another
process. Chkdsk may run if this volume is dismounted first.
ALL OPENED HANDLES TO THIS VOLUME WOULD THEN BE INVALID.
Would you like to force a dismount on this volume? (Y/N) y_
```

8)

```
C:\WINDOWS\system32\cmd.exe - chkdsk /f
Microsoft Windows XP [Version 5.1.2600]
(C) Copyright 1985-2001 Microsoft Corp.

C:\Documents and Settings\Administrator>d:
D:\>chkdsk /f
The type of the file system is NTFS.
Cannot lock current drive.

Chkdsk cannot run because the volume is in use by another
process. Chkdsk may run if this volume is dismounted first.
ALL OPENED HANDLES TO THIS VOLUME WOULD THEN BE INVALID.
Would you like to force a dismount on this volume? (Y/N) y
Volume dismounted. All opened handles to this volume are now invalid.
Volume label is Software.

CHKDSK is verifying files (stage 1 of 3)...
99 percent completed.
```

9)

```
C:\WINDOWS\system32\cmd.exe
Microsoft Windows XP [Version 5.1.2600]
(C) Copyright 1985-2001 Microsoft Corp.

C:\Documents and Settings\Administrator>d:
D:\>chkdsk /f
The type of the file system is NTFS.
Cannot lock current drive.

Chkdsk cannot run because the volume is in use by another
process. Chkdsk may run if this volume is dismounted first.
ALL OPENED HANDLES TO THIS VOLUME WOULD THEN BE INVALID.
Would you like to force a dismount on this volume? (Y/N) y
Volume dismounted. All opened handles to this volume are now invalid.
Volume label is Software.

CHKDSK is verifying files (stage 1 of 3)...
File verification completed.
CHKDSK is verifying indexes (stage 2 of 3)...
Index verification completed.
CHKDSK is verifying security descriptors (stage 3 of 3)...
Security descriptor verification completed.
Windows has checked the file system and found no problems.

72147883 KB total disk space.
66031800 KB in 79093 files.
18936 KB in 5726 indexes.
0 KB in bad sectors.
153763 KB in use by the system.
65536 KB occupied by the log file.
5943384 KB available on disk.

4096 bytes in each allocation unit.
18036970 total allocation units on disk.
1485846 allocation units available on disk.

D:\>_
```